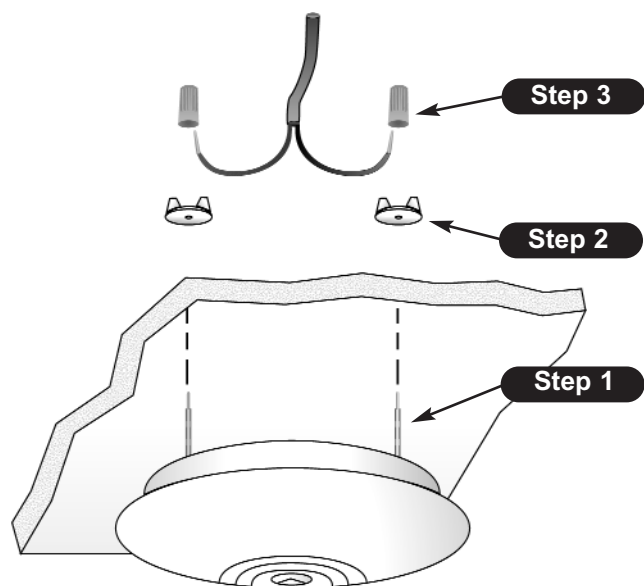


Easy Install® Speaker

Speaker Installation



STEP 1 - Set speaker tap to correct setting using the *Tap Settings* chart. Position the speaker on the ceiling tile and slowly push the speaker, forcing the studs through the ceiling tile.

STEP 2 - Clean any loose debris and foil (see note below) from around the studs. Spin the wide-based wing nuts (supplied) down the stud. Tighten the wing nuts until they are very snug (finger tighten only - no tools required). Check that the speaker is drawn tight to the ceiling tile. Fiberglass sleeves (supplied) should be placed over the studs at this point to insulate the exposed portion of the stud as a safety precaution.

IMPORTANT: When installing in ceiling tiles with foil backing, it is very important to remove foil from around the studs so that it cannot make contact with the stud. Foil that makes contact with the studs can potentially cause a short circuit of the amplifier output.

STEP 3 - The electrical connections are made to the studs with the wire nuts (2 sizes are supplied. Use the ones that fit the best for wire gauge used.). **Note:** Use 22 AWG shielded, twisted pair on all wire runs unless your layout recommends other wire to be used. Connect speaker wire shield to the ground (GND) terminal of the amplifier's output. Carry the ground through all speaker cables by tying the shields of the speaker cables together in a "daisy chain" fashion. **Do not connect the shield to the speaker itself.** The shield is only connected at the amplifier end and simply floats. The studs are color-coded to allow proper phasing.

Suggested amplifier connections are:

COPPER stud - 70V
NICKEL stud - COMMON

The speaker will also work perfectly well with these connections reversed. However, it is important to be consistent in the wiring of the speakers in the system. If adjacent speakers have reversed wiring connections, they will tend to cancel each other's bass response, diminishing the sound quality.

Nylon wire ties (supplied) can be used to secure the speaker wires to the studs if desired. (Nylon wire ties should wrap around the fiberglass sleeve.)

TAP SETTINGS

POWER SET (WATTS)	dBspl (@70V)
0.25	87
0.5	90
1	93
2	96
4	99